



Life with Cancer[®]



Wish Book

Life with Cancer[®]
8411 Pennell Street
Fairfax, Virginia 22031
Phone: 703-698-2526
www.lifewithcancer.org



Life with Cancer[®]

Experience a Community of Hope

Life with Cancer has been an integral part of the health care community since 1986, working to help people face the challenges of living with cancer by providing information, education and support. Funded primarily by community contributions, our programs and services are offered free of charge to people with cancer, their relatives and friends regardless of where treatment is received.

Who We Are and What We Do

Life with Cancer, with its experienced and professional staff, works to meet the varied needs of people facing cancer by providing comprehensive services including:

- classes and support groups
- seminars and workshops
- an exercise program
- programs for children and teens
- inpatient education and counseling
- outpatient education and counseling
- resource and lending libraries
- community and workplace presentations
- telephone information and referral
- volunteer opportunities



Why Your Support Matters

As a not for profit health care provider, Life with Cancer along with Inova Cancer Services, reinvests all of its income into programs, people and services to improve the community's health.

Our programs, classes, support groups and counseling depends on contributions from generous donors, events and the community.

With the support we are given we are able to provide services that would otherwise go unmet for those facing cancer.

What we offer: Services and Specialties

- Life with Cancer is community funded; all classes, groups and services are free of charge
- online registration is available at www.lifewithcancer.org
- anyone in treatment or remission may attend classes regardless of where treatment is received
- family and friends may attend classes



**INOVA[®] CANCER
SERVICES**

Gift Acceptance Guidelines



- All donations must be **BRAND NEW** due to Inova's infection control requirements.
- All products and toys should meet the Consumer Product Safety Codes.
- Painted toys should be sturdy and non- toxic. Any glue or craft kits donated must be made of non- toxic materials.
- If you are not sure or have any questions regarding items, please contact Life with Cancer at 703-698-2532.

Gift Certificates/ Gift Cards- any denomination appreciated

All our programs can benefit from donations of gift certificates/ gift cards to craft stores, video stores, music web sites, and specialty shops.

May we suggest: Wal-Mart, Target, Best Buy, Michael's, Office Max, Toys "R" Us, and Bed Bath and Beyond.

Or we are always delighted to receive a gift card from those organizations that help support us: Crate and Barrel, Panera, and Whole Foods.

Items for the Family Center

This one of a kind Family Center is a safe place for those facing cancer and their loved ones. The house was designed to bring a sense of comfort and familiarity to those visiting. Although the house has become a reality, program support donations are still being accepted.

Flowers for Reception area:

Weekly floral arrangements for reception area of family center.

Price- \$40

Quantity- 26 Total-\$1,040

Flowers for Reception area:

Weekly floral arrangements for reception area of family center.

Price- \$40

Quantity- 13 Total- \$520

Flowers for Reception area:

Weekly floral arrangements for reception area of family center.

Price- \$40

Quantity- 7 Total- \$280

Flowers for Reception area:

Weekly floral arrangements for reception area of family center.

Price- \$40

Quantity- 4 Total- \$160

Automated External Defibrillators:

Automated External Defibrillator for all three floors of Family Center.

Price- \$1,700

Quantity- 3 Total- \$5,100

Wooden Bookcases:

Wooden Bookcases to help furnish needed rooms.

Price- \$500

Quantity- 3 Total-\$1,500

Scanner:

Scanner for staff.

Price- \$300

Quantity- 1 Total- \$300

Color Printer:

High speed color printers for main and second floor.

Price- \$900

Quantity- 2 Total- \$1,800

Aquarium:

One years of maintenance, supplies/fish for donated aquarium in Children's area.

Price- \$1,800

Quantity- 1 Total- \$1,800

Landscaping Services:

Landscaping services – plants for front circle garden plot.

Price-\$500

Journals:

Journals for writing program.

Price-\$20

Quantity-20 Total\$- \$400

Art Supplies:

Art supplies and crafts for offsite LWC programs.

Total- \$1,000

Refreshment Sponsor:

Refreshment for patient – family educational meetings- one per week.

Price- \$50

Quantity- 52 Total- \$2,600

Upward Lighting Floor Lamp:

Floor lamp for corner of Exercise room.
Total- \$150

Table Lamp:

Table lamp for counter in exercise room.
Total- \$100

Microwave:

Microwave for staff workroom.
Total- \$200

Refreshment Sponsor:

Refreshment for patient – family educational meetings- three per week.
Price- \$50
Quantity- 156 Total- \$7,800

Refreshment Sponsor:

Refreshment for patient – family educational meetings- two per week.
Price- \$50
Quantity- 104 Total- \$5,200

Items for off site Life with Cancer Programs

Organizational Unit:

Shelf unit to help organize DVD's for patients.
Total- \$110

DVD's for Patients:

DVD's for patients and families.
Price- \$25
Quantity- 8 Total- \$200

Board Games for Patients:

Price- \$30
Quantity- 4 Total- \$120

Portable CD Players:

Portable CD players for patients.
Price- \$50
Quantity- 6 Total-\$300

Reiki Table:

Massage table for Reiki
Quantity- 1 Total- \$500

Blankets:

Blankets to help with positioning for yoga, meditation programs, etc.
Price- \$10
Quantity- 12 Total-\$120

Yoga Block:

Foam Yoga Block.
Price-\$4
Quantity- 12 Total: \$48

Yoga Eye Pillow:

Yoga eye pillow for classes.
Price- \$5
Quantity- \$12 Total: \$60

Free hand weights:

Hand weights that range from 2-5lbs.
Price- \$5
Quantity- 6 Total:\$30

Chairs for the LWC/ Nando Family Room:

Chairs to furnish the family room on Tower 9.
Price- \$600
Quantity- 4 Total- \$2,400

Game table for patients.

Wooden game table to play various games.
Price- \$600
Quantity- 1 Total- \$600

Game table chairs for patients.

Matching chairs for game table for patients.
Price- \$200
Quantity- 4 Total- \$800

Life with Cancer Programs



Cordless Presenters:

Cordless Presenters for PowerPoint presentations.

Price- \$50

Quantity- 3 Total- \$150

Life with Cancer Buttons:

LWC buttons for health fairs and promotion.

Price- \$.50/each

Quantity- 1,000 Total- \$500

CD Recorder:

CD Recorder with MP3 Playback.

Price- \$650

Quantity- 3 Total- \$1,950

Wireless Microphone System:

Wireless microphone for Great Room.

Price- \$800

Speaker System:

Surround sound speaker system for main Great Room.

Price- \$2,500

Digital Camera:

Digital Camera for programs and projects.

Price- \$300

Quantity- 1 Total- \$300

Relaxation CD's:

Relaxation CD's for offsite LWC programs.

Price- \$15

Quantity-20 Total- \$300

Video Camcorder and Tripod set:

Video camcorder and tripod set for recording educational offerings.

Price- \$1,000

Quantity- 1 Total- \$1,000

Portable CD Players:

Portable CD players for infusion patients.

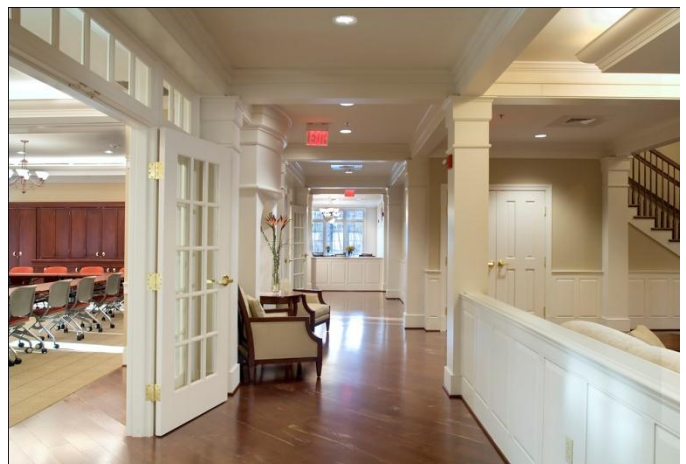
Price- \$50

Quantity- 10 Total- \$500

Caregiver Retreat:

For 25 people -\$5,000

For 50 people- \$10,000



Children and Teens



Regardless of who's diagnosed with cancer, the whole family is affected...and it may be the children who are taking it the hardest. Whether they have cancer or it's someone close to them, children and teens have unique needs and concerns during this tough time- and that can be overwhelming for them, their parents and relatives.

Bop bag:

Bop bag for play therapy.

Price- \$30

Quantity- 4 Total- \$120

Sculpy Clay (various colors):

Price- \$2.00

Quantity- 30 Total- \$60

Toy Medical Kit

Toy medical kit for play therapy.

Price- \$30

Quantity- 2 Total- \$60

Model Magic (small packages):

Model Magic for play therapy.

Price- \$10

Quantity- 15 Total- \$150

Wooden Toy to Hammer / Wood Working Play Kit

Play wooden toy kit for play therapy.

Price- \$20

Quantity- 3 Total- \$60

Various Wii Games:

Wii games for teen lounge, must be PG rated.

Price- \$50

Quantity- 4 Total- \$200

Wii Charging Station

Quantity- 2

Price- \$30 Total- \$60

Wii Remotes

Price- \$40

Quantity- 2 Total- \$80

Nunchuks – Part of Wii Remotes

Quantity- 4

Price- \$20 Total- \$80



Classes and Support Groups

Indoor Labyrinth:

Labyrinth for classes and retreats.

Quantity- 1

Price- \$400 Total- \$400

Cancer Survivor Retreat:

For 25 people - \$5,000

For 50 people - \$10,000

Art Therapy Supplies:

Paper, paints, easels, beads, glue, etc.

Total- \$1,000

Art Therapy Furniture:

Activity table, chairs and cabinet.

Total- \$700

Makeup Mirrors:

Makeup Mirrors for Look Good~

Feel Better Classes.

Quantity- 20

Price- \$25 Total- \$500

Appearance Center Supplies-cosmetics:

Cosmetic supplies for cancer patients.

Quantity- 10

Price- \$500 per order

Appearance Center Supplies- skin and hair care:

Skin and hair care products for cancer patients.

Quantity- 10

Price- \$500 per order

Appearance Center Gifts/ Inspirational Supplies:

Gift and inspirational items for cancer patients.

Quantity- 10

Price- \$500 per order

Appearance Center Clothing Supplies:

Hats, caps and clothing supplies for cancer patients.

Quantity- 10

Price- \$500 per order

Appearance Center Supplies:

Mastectomy supplies/ prostheses for cancer patient

Quantity- 10

Price- \$500 per order

Breast Exam Teaching Models:

Quantity- 6

Price- \$100 Total- \$600

Massage Therapy Supplies:

Massage therapy supplies (sheets, pillows, neck cushions, massage oil, etc.

Quantity- 10

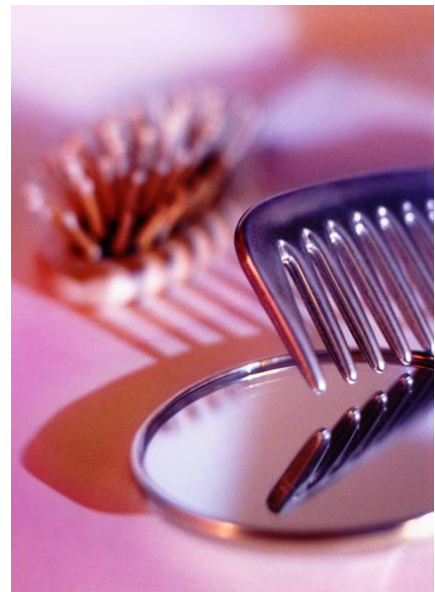
Price- \$100 per order

Eye Pillows:

Eye pillows for Reiki.

Quantity- 10

Price- \$15 Total- \$150



**CD Boom Box or iPod –
MP3 Player with Amplification:**
for massage room.
Quantity- 2 Total- \$400

Pillows and Blankets:
Pillows and blankets for Reiki.
Price- \$40
Quantity- 10 Total- \$400

Nutrition Program Supplies:
Books, foods, cookware for
Nutrition – Cooking programs.
Gift Certificates in any domination
at Whole Foods, Target, Crate & Barrel,
Costco, Walmart, Trader Joe's
Quantity- 20
Price- Gift Certificate

Chimes:
Table top chimes for relaxation programs.
Total: \$200

Portable CD Player for Spanish Programs:
Price- \$50
Quantity-3 Total- \$150

Spanish Language CD's :
Spanish language CD's for Spanish Programs.
Price- \$20
Quantity- 12 Total-\$320

Exercise Mind Body Wellness

Yoga Bolster:
Standard Round Yoga Bolster.
Price- \$26
Quantity- 25 Total- \$650

Relaxation CD:
Steve Halpern, etc.
Price- \$15
Quantity- 20 Total-\$300

Massage Gift Certificate for Patients at LWC
One hour massage at LWC by trained massage
therapist.
Price- \$50
Quantity- 20 Total- \$1,000

CD Boom Box:
Compact CD Boom Box.
Price- \$50
Quantity- 6 Total- \$300

**CD boom box or iPod –
MP3 Player with amplification**
system for exercises classes.
Quantity – 1 Total - \$200



Naming Opportunities Remaining at Life with Cancer
Your gift and your name here
will help us to assist those touched by cancer!

Level	Room	Amount
G	Garden Room	\$500,000
G	Picnic Table/ benches	\$ 5,000
G	Labyrinth for Garden	\$ 10,000
1	Art Therapy Studio	\$200,000
1	Conference Room	\$ 75,000
2	Staff Work Room	\$ 15,000
2	Administrative Office Clusters 1 of 2 (Group Home)	\$ 15,000
2	Administrative Office Clusters 2 of 2 (Group Home)	\$ 15,000
2	Program Manager's Office	\$ 20,000
2	Living with Cancer Room	\$100,000
2	Multicultural Meeting Room	\$ 25, 000

Be a Hero and support a program!

Program	Amount
Life with Cancer Complimentary Therapies	\$5,000
Breast Cancer Support Program	\$5,000
Programs for Children and Teens	\$5,000
Community Outreach and Professional Education	\$5,000

Thank you for making a difference
in the lives of our patients and their family and friends
we are so privileged to serve.

All contributions to Life with Cancer® are tax deductible
to the extent the law allows. Contributions can be matched
through your company's matching gifts program.

For more information about Life with Cancer®
or how you can make a difference, contact:
the Foundation Offices at:

Eric Cohen
Program Manager
Life with Cancer
Inova Health System Foundation
703-698-2531
Eric.Cohen@inova.org

Sanya N. Younossi
Development Intern
Life with Cancer
Inova Health System Foundation
703-698-2532
Sanya.Younossi@inova.org

